



NON-STICK SOLUTION

HEFEST MINERALS

A Brazilian company with headoffice in the city of Belo Horizonte, Minas Gerais State.

Focus on sustainability of mineral industry.

Excellency in services, ethics and social-environmental responsibility.



HEFEST MINERALS

Mining, construction and
concret Market.

Our team is always ready
to comply with legislations
and internal consumers
rules



HEFEST MINERALS

South América distributor for mining release agent Slipcoat **MRA™**, the world most used.

Full solution for problems with mineral adherence during handling of material.



SLIPCOAT MRA™ PACKING

SLIPCOAT MRA™ is a patented technology that creates a thin layer in the surfaces applied, reducing the cutting forces and avoiding mineral sticking problems. Ready to use there is no need for blending or dilution.



Metal and Plastic Tote
1.000 liters

SLIPCOAT MRA™ ECOLOGIC

99,8 % Biodegradable, inert and non toxic with three zeros in *Hommel Diamond*. Safety for people and the environment.

Ecologic certification from *USDA Biobased*.

Safety Department of all largest mining company approved it.



HEFEST MINERALS FULL SOLUTION

Full solution to mineral adherence problems in handling material, with patented products, customized equipment and specialized services.



CUSTOMIZED APPLICATION SYSTEM



SLIPACOAT MRA™ APPLICATION

- ✓ TRANSFER CHUTE
- ✓ EXCAVATOR BUCKET
- ✓ TRUCK BOX
- ✓ RAIL ROAD WAGONS
- ✓ PELETIZING DISCK
- ✓ MOVING PARTS
- ✓ RECLAIMERS
- ✓ HOOPER
- ✓ SILUS



SLIPCOAT MRA™ TRANSFER CHUTE

The use of *SLIPCOAT MRA™* in transfer chute will reduce material build-up in the walls and impact tables, eliminate or reduce clog, with a direct gain of efficiency.



NO TREATMENT



WITH SLIPCOAT MRA™
TREATMENT

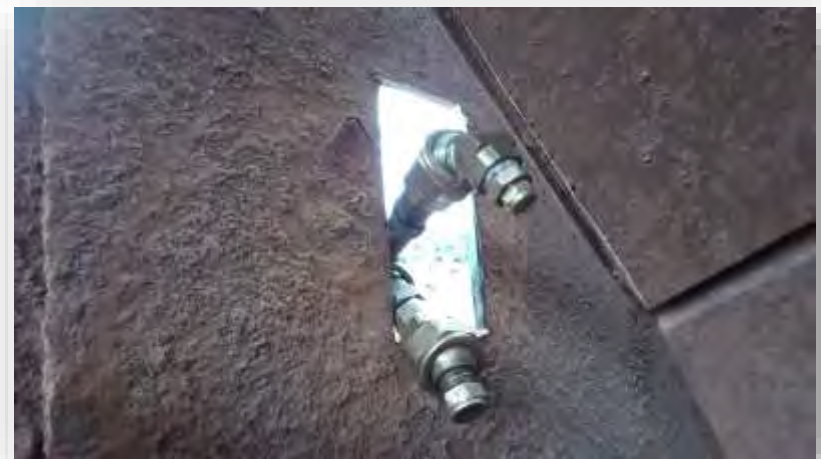
SLIPACOAT MRA™ TRANSFER CHUTE



SLIPACOAT MRA™ TRANSFER CHUTE



SLIPACOAT MRA™ TRANSFER CHUTE



SLIPACOAT MRA™ TRANSFER CHUTE



SLIPACOAT MRA™ TRANSFER CHUTE



SLIPCOAT MRA™ EXCAVATOR BUCKET

On board system allow the operator to ease apply the solution in the bucket to keep it clean and increase productivity and reduce time of load, delivering more material.



NO TREATMENT



**WITH SLIPCOAT MRA™
TREATMENT**

SLIPACOAT MRA™ EXCAVATOR BUCKET



SLIPCOAT MRA™ RAIL WAGON LOADER



SLIPCOAT MRA™ RECLAIMER AND YARD MACHINES



SLIPCOAT MRA™ TRUCK BOX

With the use of **SLIPCOAT MRA™** the simple movement of dumping the truck box is enough to release all the material, avoiding carryback build up, and gaining an important operational productivity. Save time, fuel and maintenance cost.



NO TREATMENT



WITH SLIPCOAT MRA™
TREATMENT

SLIPCOAT **MRA™** OFF HIGHWAY TRUCK BOX

Automated application system is the easy way to spray *SLIPCOAT **MRA™***, in Off-Highway truck box and easy way the fleet, higher performance and better fuel efficiency.



NO TREATMENT



WITH SLIPCOAT **MRA™
TREATMENT**

SLIPCOAT MRA™ TRUCK BOX



SLIPCOAT **MRA™** TRUCK BOX



SLIPCOAT MRA™ RAIL WAGON

The *SLIPCOAT MRA™* in rail wagons will reduce mineral adherence effect and free water formation in the top of the load, making easier to unload at destination, reducing time and dead weight formation.



NO TREATMENT



WITH SLIPCOAT MRA™
TREATMENT

SLIPACOAT MRA™ RAIL WAGON



SLIPCOAT MRA™ MOVING PARTS



SLIPCOAT MRA™ MOVING PARTS



HEFEST MINERALS CLIENTS





A HEFEST MINERALS

MORE PRODUCTIVITY IN
YOUR OPERATION!

